



# School Interiors

Creative spaces for  
kids to learn & grow

Entries & Receptions • Pathways • Classrooms • Libraries • Performing Arts Theatres • Multipurpose Halls

[SUPAWOOD.COM.AU](http://SUPAWOOD.COM.AU)

**SUPAWOOD**  
ARCHITECTURAL LINING SYSTEMS



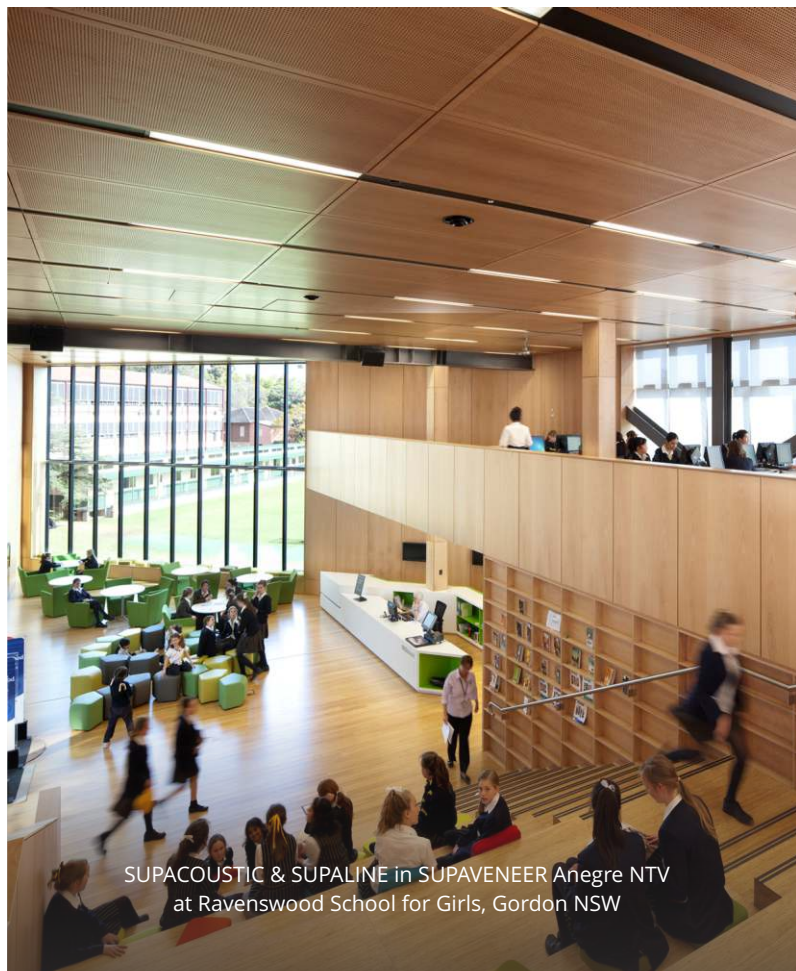
# School Interiors

School environments play a crucial role in our education system and need to provide safe, inspiring spaces for children to gather, learn and play. These environments require linings which successfully reduce noise reverberation, are robust, easy to maintain and have longevity while simultaneously providing great aesthetic appeal.

With hundreds of successful school projects completed, Supawood can offer expert advice and multiple options to suit your client's project and budget. Our lining systems can meet the most stringent BCA fire compliance requirements, come with a range of tried and tested acoustic solutions and inspiring creative finishes.



SUPACOUSTIC PLK-Fixing & SUPALINE in  
SUPAFINISH Hoop Pine laminate at  
Barker College Junior School, Hornsby NSW



SUPACOUSTIC & SUPALINE in SUPAENEER Anegre NTV  
at Ravenswood School for Girls, Gordon NSW





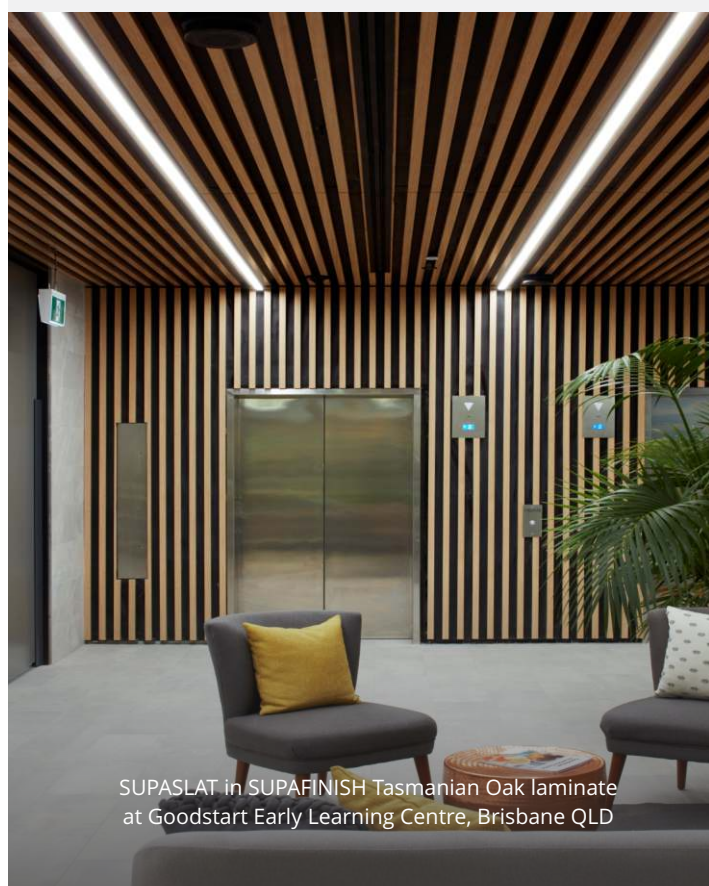
SUPALINE in SUPAVENTEER NTV at Pymble Ladies College, Pymble NSW



SUPACOUSTIC in SUPAFINISH Euro Beech laminate at Barker College, Hornsby NSW

## Entries Points & Receptions

The face of the school which reflects the quality of what is within.

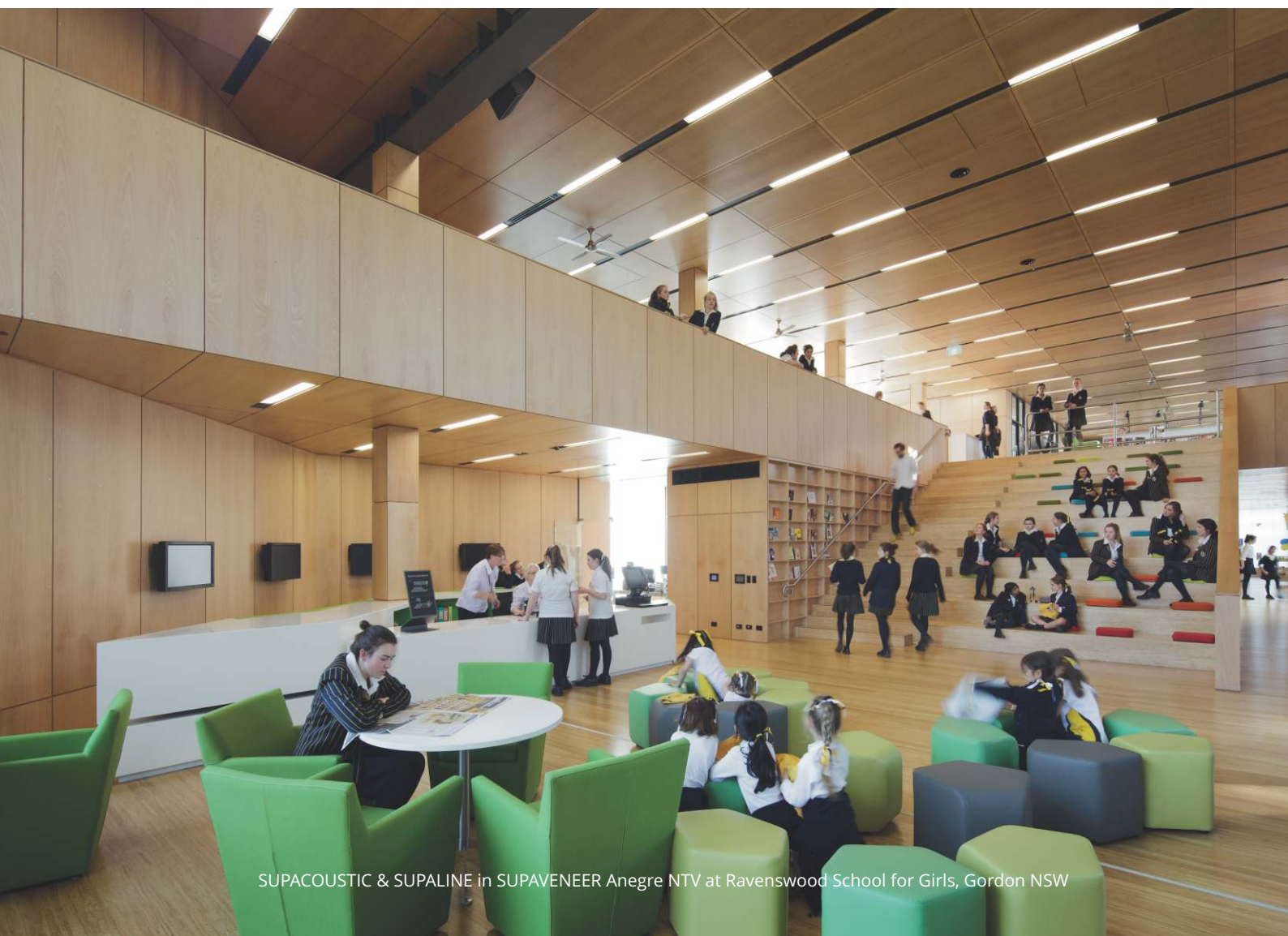


SUPASLAT in SUPAFINISH Tasmanian Oak laminate at Goodstart Early Learning Centre, Brisbane QLD





WAVE BLADES in SUPAENEER American Oak NTV at St George's Anglican Grammar, Perth WA

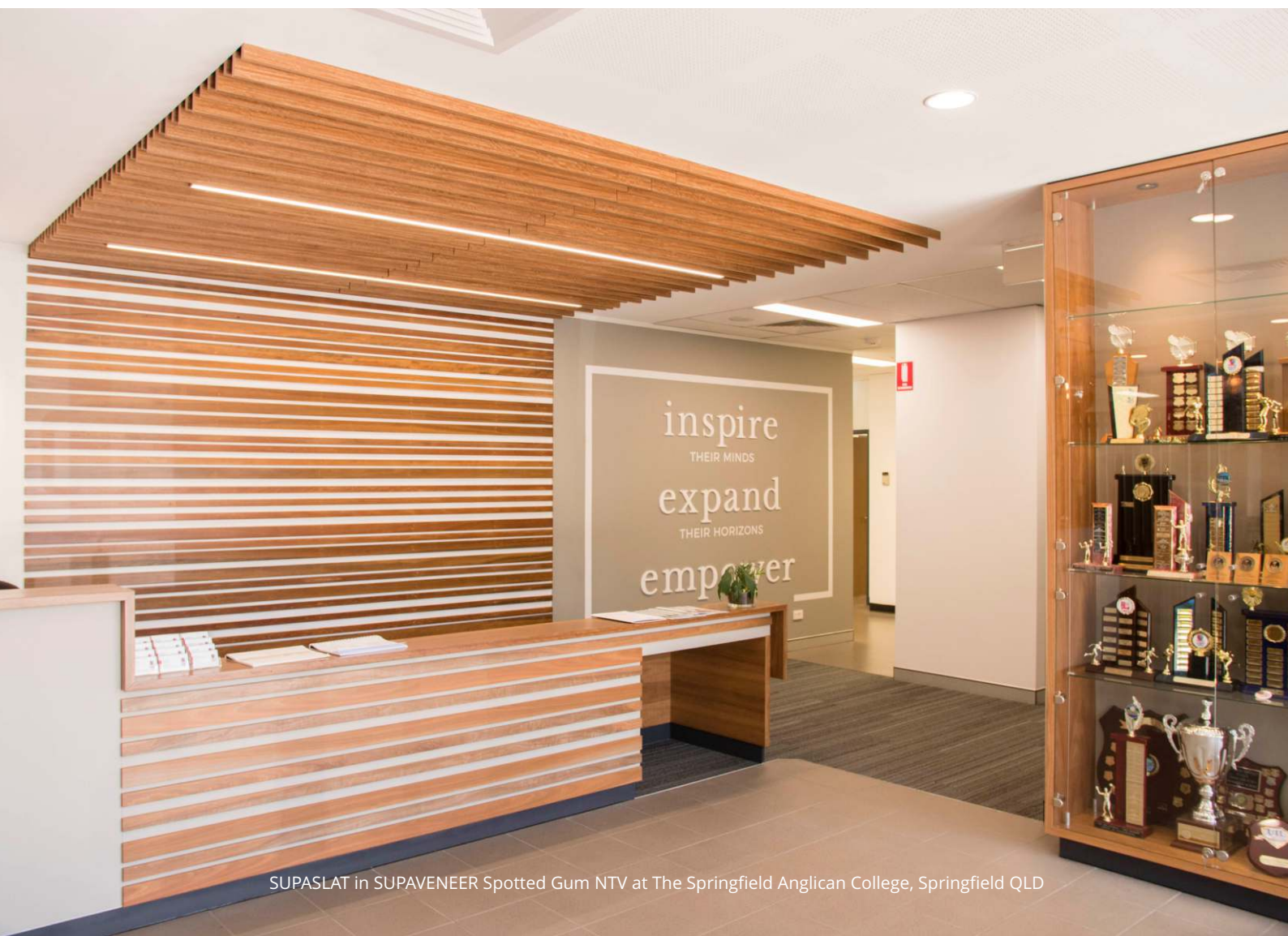


SUPACOUSTIC & SUPALINE in SUPAENEER Anegre NTV at Ravenswood School for Girls, Gordon NSW





SUPATILE SLAT in SUPAFINISH Tasmanian Oak laminate at Wesley College, South Perth WA



SUPASLAT in SUPAENEER Spotted Gum NTV at The Springfield Anglican College, Springfield QLD





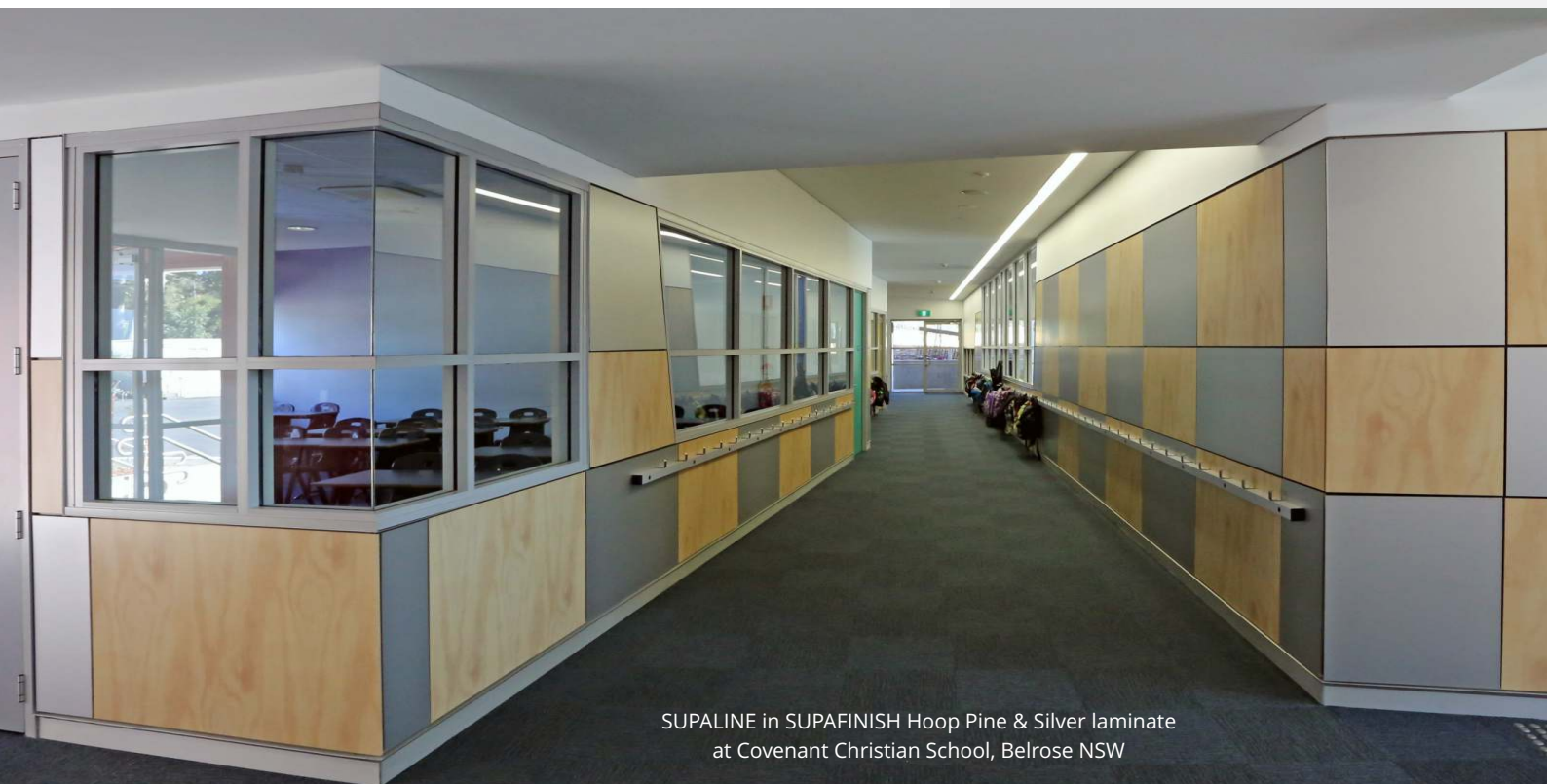
MAXI BEAM in SUPAFINISH Tasmanian Oak laminate  
at Chevalier College, Burradoo NSW



SUPATILE SLAT in Western Red Cedar

## Circulation Areas

High traffic areas need attractive and robust linings which meet all BCA Fire hazard requirements and eliminate noise.



SUPALINE in SUPAFINISH Hoop Pine & Silver laminate  
at Covenant Christian School, Belrose NSW





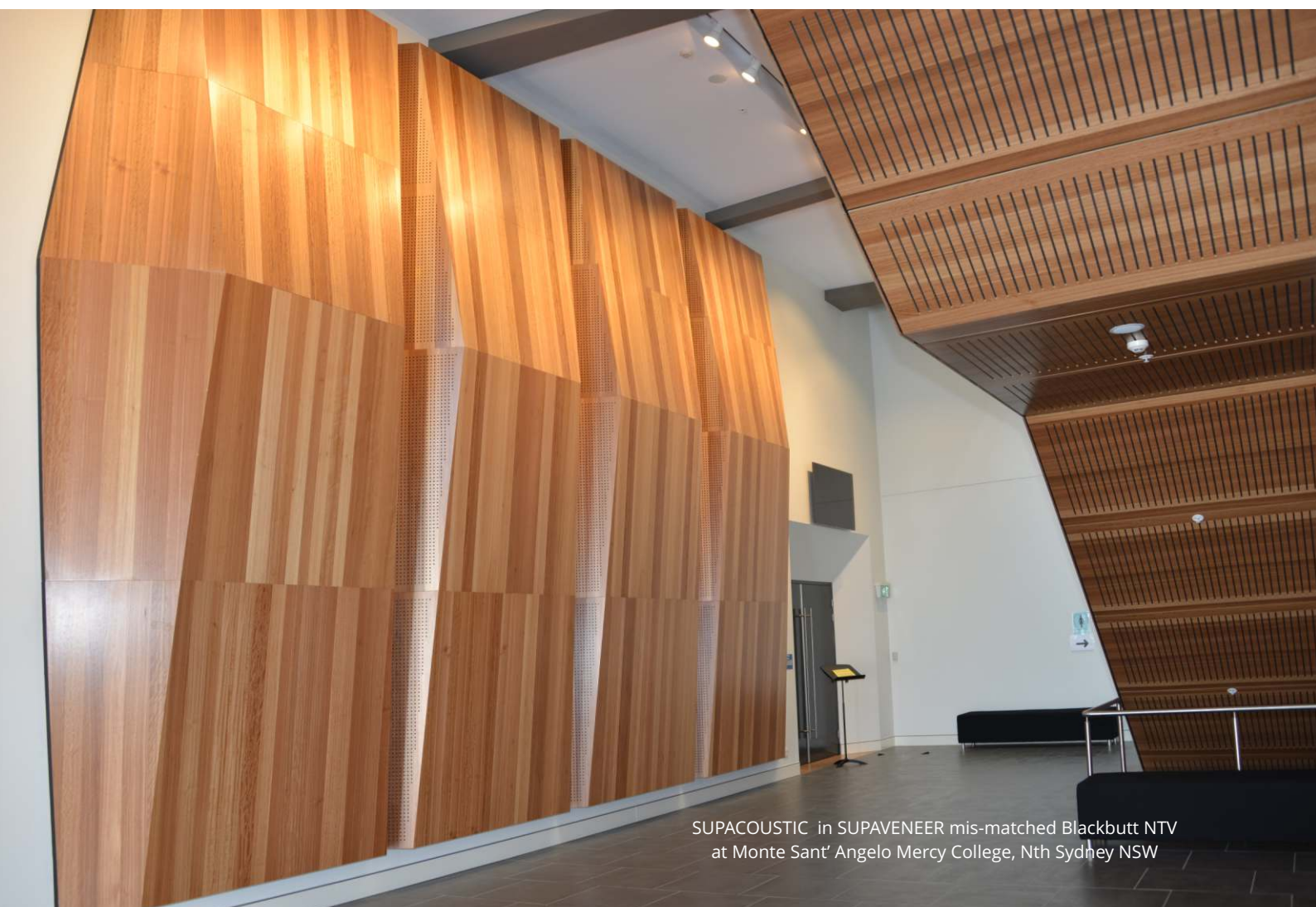
SUPATILE SLAT in SUPAFINISH  
Tasmanian Oak laminate  
at Wesley College, South Perth WA



SUPACOUSTIC PLK-Fixing  
in SUPAFINISH Hoop Pine laminate  
at Penrith Anglican College, Orchard Hills NSW



MAXI BEAM in SUPAENEER Blackbutt 1/4 cut NTV



SUPACOUSTIC in SUPAENEER mis-matched Blackbutt NTV  
at Monte Sant' Angelo Mercy College, Nth Sydney NSW





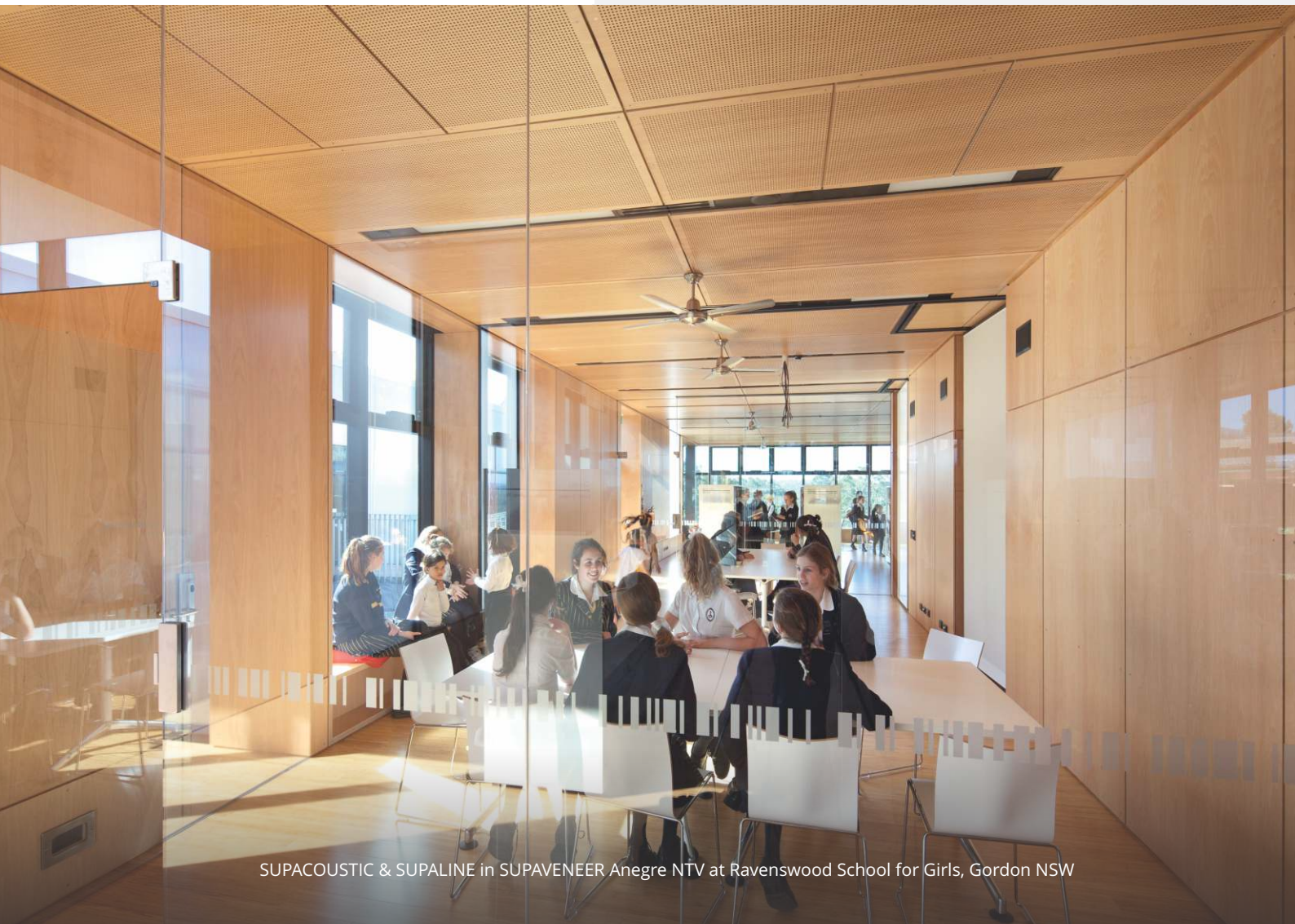
SUPATILE SLAT in SUPAFINISH Tasmanian Oak laminate  
at Wesley College Sth Perth WA



SUPACOUSTIC in  
SUPAFINISH Euro Beech  
laminate at Roseville College,  
Roseville NSW

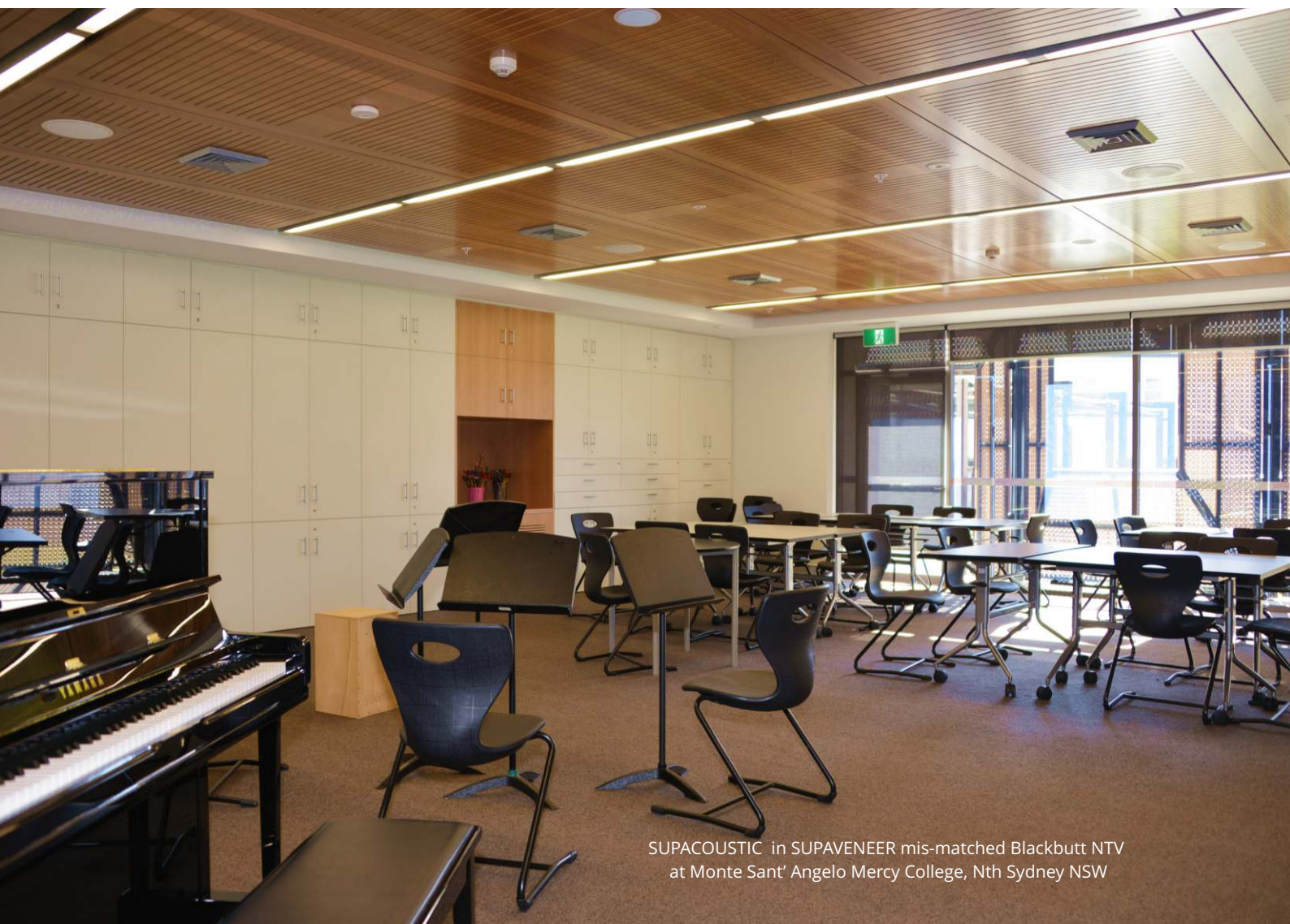
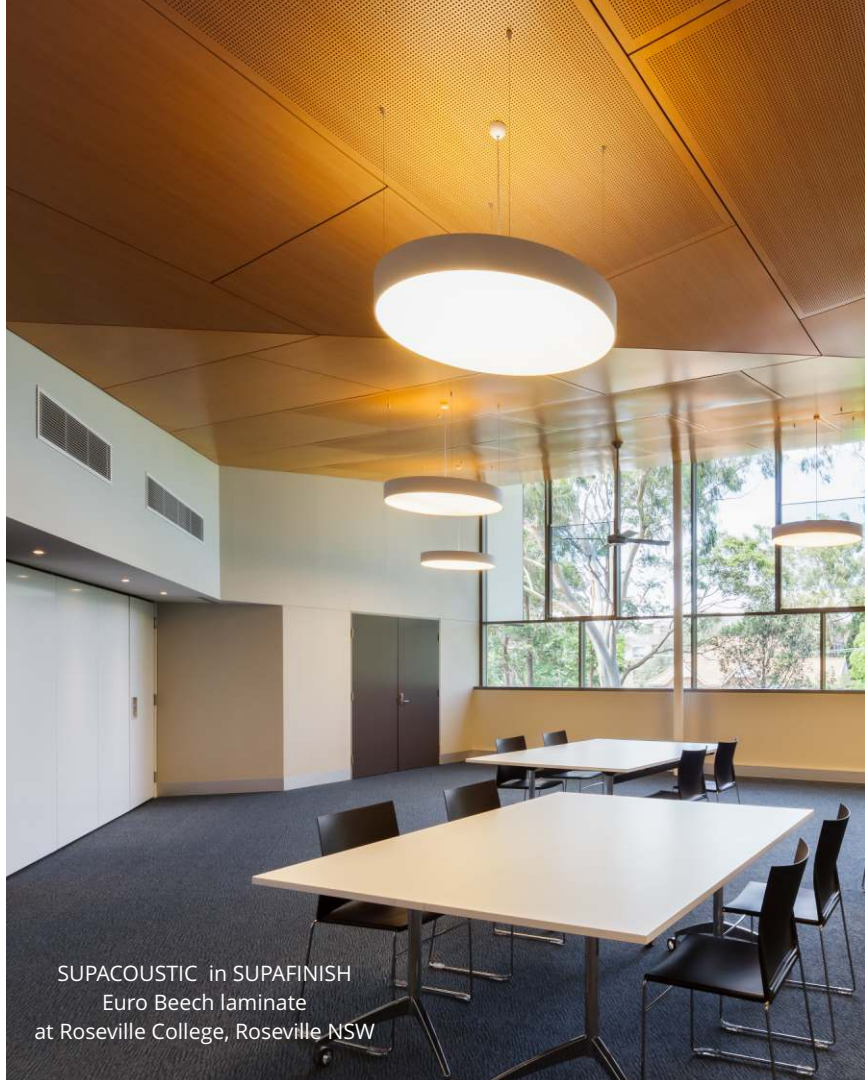
## Classrooms

Excessive noise in a classroom makes teaching difficult, is disruptive to the learning process, and also affects student behaviour and educational outcomes. These areas require effective acoustic solutions that meet BCA fire hazard requirements.



SUPACOUSTIC & SUPALINE in SUPAENEER Anigre NTV at Ravenswood School for Girls, Gordon NSW









SUPATILE SLAT in Western Red Cedar



SUPACOUSTIC in SUPAENEER Spotted Gum NTV  
at The Springfield Anglican College, Springfield QLD

## Libraries

Maximising acoustic absorption is critical for spaces such as libraries or media centres where a quiet environment is important.



SUPACOUSTIC & SUPALINE  
in SUPAENEER Anegre NTV at  
Ravenswood School for Girls, Gordon NSW





SUPATILE DIT in SUPAFINISH Hoop Pine & Silver laminate at All Saints School, Albany Creek QLD



SUPATILE DIT in SUPAFINISH Fusion Maple laminate at St Marks PS Drummoyne NSW



SUPACOUSTIC & SUPALINE in SUPAENEER Anegre NTV at Ravenswood School for Girls, Gordon NSW (and front cover)



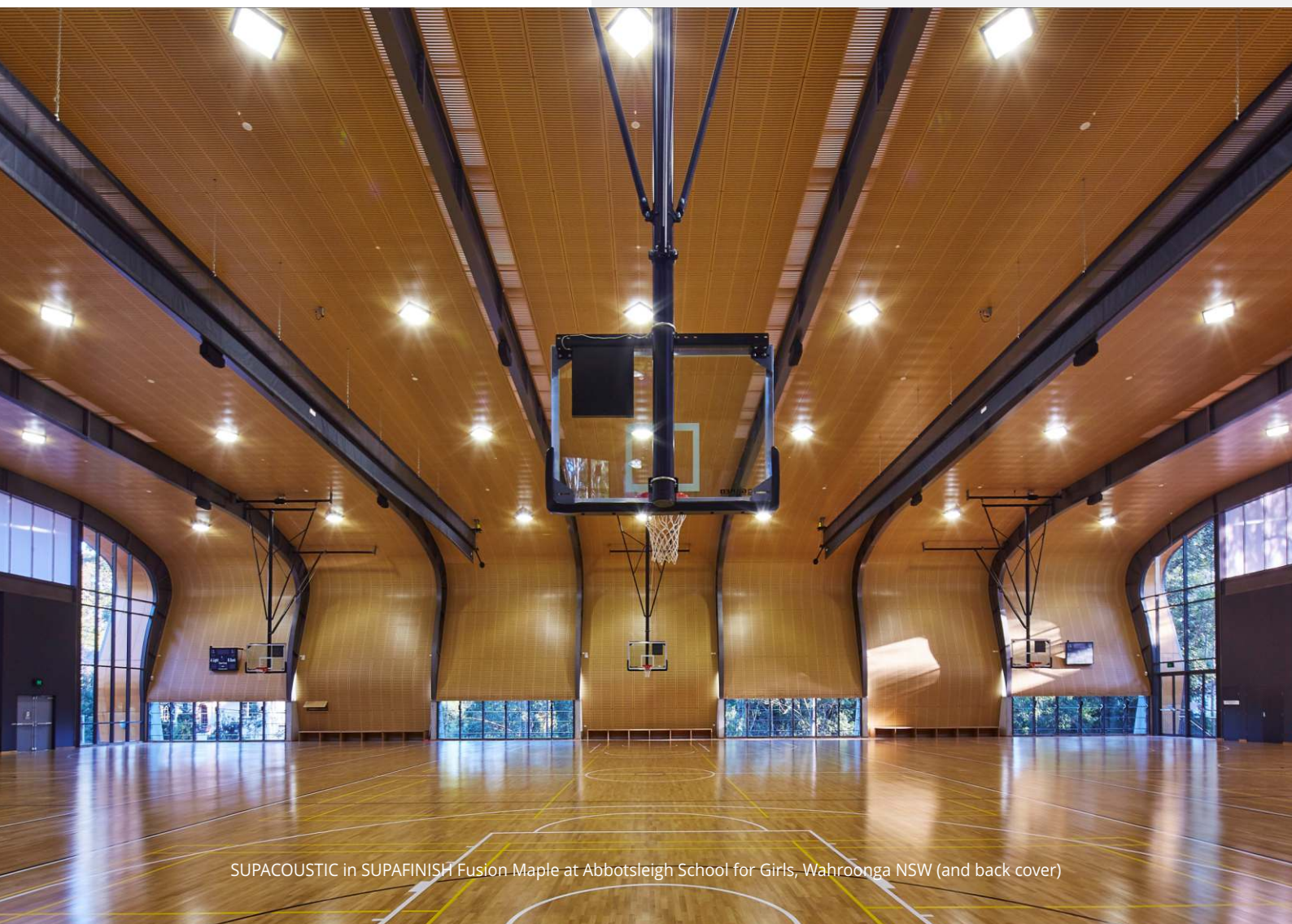
SUPACOUSTIC NCK-Fixing in SUPAFINISH Tasmanian Oak laminate at Tamborine Mountain College, North Tamborine QLD



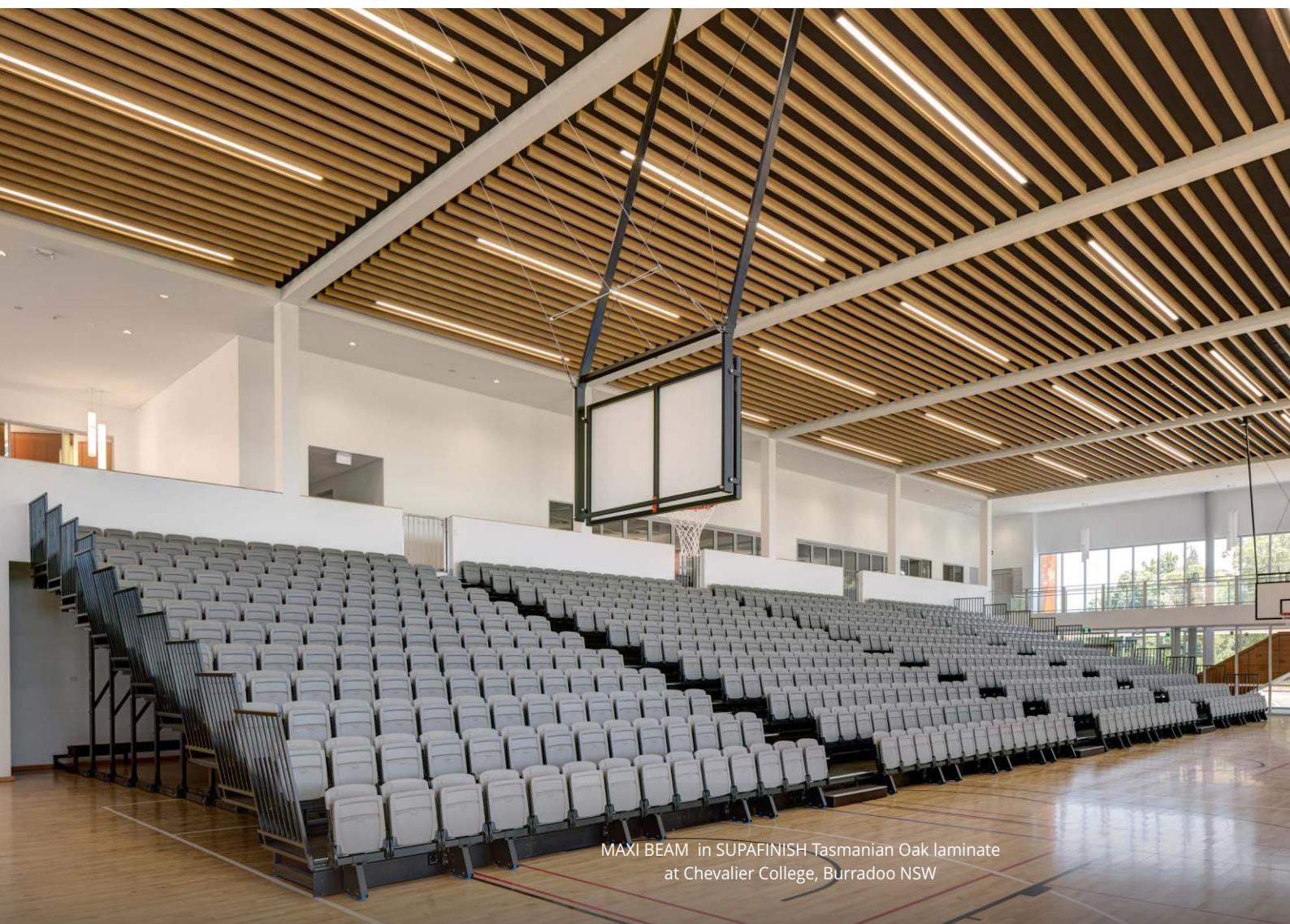


## Multi-purpose Halls

Large interior spaces used for assemblies, concerts, indoor sport and other gatherings can be very noisy and need acoustic solutions to address reverberation while ensuring durability and ease of maintenance - the perfect application for SUPACOUSTIC acoustic panels.











SUPACOUSTIC & SUPALINE in SUPAFINISH Fusion Maple laminate



SUPACOUSTIC PLK in SUPAFINISHED - ceiling White, walls Tasmanian Oak, stage surround Smooth Mahogany at Cathedral School, Bathurst NSW





SUPASLINE & SUPASLAT in SUPAFINISH European Beach laminate at Barker College Kurrajong Building, Hornsby NSW



SUPACOUSTIC & SUPASLINE PLK-Fixing in SUPAFINISH Hoop Pine laminate at Penrith Anglican College, Orchard Hills NSW

## Performing Arts Theatres

Optimal acoustics are essential to the success of these spaces. SUPAWOOD have solutions for every combination of absorption, reflection and diffusion.



SUPACOUSTIC & SUPASLINE in SUPA VENEER mis-matched Blackbutt NTV at Monte Sant' Angelo Mercy College, Nth Sydney NSW





SUPALINE, SUPASLAT & SUPACOUSTIC in SUPAFINISH Fusion Maple laminate at Barker College Kurrajong Building, Hornsby NSW



SUPACOUSTIC & SUPALINE in SUPAFINISH Tasmanian Oak laminate at Chevalier College, Burradoo NSW





Custom reflective SUPACOUSTIC panels in SUPAVENEER NTV  
at Pymble Ladies College, Pymble NSW



SUPACOUSTIC NCK-Fixing in SUPAFINISH Black, Matt Silver &  
Hoop Pine laminate at Central Coast Grammar, Erina Heights NSW



# Product Range

## Panels

**SUPATILE** – Drop-in ceiling tiles that address noise reverberation in open workspaces with style.

**SUPACOUSTIC** – High-performing decorative acoustic panels to address noise reverberation. Perfect for meeting rooms and quiet zones. Panels are suitable for both ceilings and walls, and patterns can be customised to suit the client's brand.

**SUPALINE** – Durable decorative panel system for feature walls and ceilings. Ideal for high traffic areas such as lobbies, receptions, atriums and corridors. Panels are generally solid, but grooved or routed effects are possible.

## Slats

**SUPATILE SLAT** – Fully accessible slatted ceiling tiles make designing distinctive breakout and collaboration spaces easy.

**SUPASLAT** – Versatile linear slatted wall and ceiling panels. Great to transform any reception, collaborative or corridor space.

## Beams

**ALUCLICK** – Aluminium decorative beam system. Beams 'click lock' into a standard suspension system. Applications include exterior façade upgrades and entry areas.

**MAXI BEAM** – Lightweight beam system for feature beam ceilings, walls or screens. Use semi-visual screens as dividers between receptions, breakout areas and the main office space.

**WAVE BLADES** – Sculptured timber blade features for ceilings and walls. Create eye-catching contoured effects in reception and open workspaces.

**WAFFLE BLADES** – Striking geometric ceiling effects made easy. Blades can be criss-crossed and angled in a myriad of ways. Ideal for reception and collaborative spaces.

Supawood can adapt an innovative solution for your unique design requirements.



### Lighting

This can be incorporated between slats, beams and panels or set into slatted and flat panels in a regular pattern. Other lighting such as pendent lighting can be hung from or between panels.



### Airconditioning Diffusers

Linear diffusers can be placed between beams and slats, concealed in services zones, or square diffusers can be used to fill a half panel space.



### Other Services

Fire sprinklers, smoke detectors and other services can be set out neatly between panel components or centred in panels wherever possible.



### Access Panels

Hidden access to services in the wall or ceiling cavity is an option available across our range. Our SUPATILE ceiling tile products will provide full accessibility across the entire ceiling.





# Sustainable Design

SUPAWOOD can meet your project's sustainability requirements including Green Star rating. We are a certified FSC and PEFC Chain-of-Custody supplier. Our lining solutions can also be specified in materials with low VOC and Formaldehyde emissions.

We will work closely with your design team to ensure a high level of environmental efficiency throughout your project.

## Fire Retardancy

Our panels, slats and beams have been fully tested to meet Fire Group 1, 2 and 3 requirements in Australia and New Zealand. They are suitable for all critical areas and available in FR rated timber finished options.

## Acoustics

SUPAWOOD have high end architectural linings for reverberation control and optimal acoustics. This is crucial in any busy environment where noise needs to be controlled.

We can supply full NATA certified test results, scattering coefficients and other technical documentation, all designed to help you make the right choice for your next project.



SUPACOUSTIC Breeze pattern panels in SUPAFINISH Black laminate

SUPACOUSTIC PLK Fixing panels in a fire retardant option finished in SUPAFINISH Hoop Pine laminate





**SUPAWOOD**  
ARCHITECTURAL LINING SYSTEMS

**SUPAWOOD HEAD OFFICE**

Australasian Support & Manufacturing  
Aus: +61 1800 002 123  
NZ: +64 (0) 9887 3234  
[info@supawood.com.au](mailto:info@supawood.com.au)

**SUPAWOOD UK**

UK & EU Support & Manufacturing  
+44 (0) 3307 00 00 30  
[sales@supawood.co.uk](mailto:sales@supawood.co.uk)

[SUPAWOOD.COM.AU](http://SUPAWOOD.COM.AU)

As **adaptable** as your *imagination* ...